



RS05 CAS

Backpack vacuum cleaner



Operating Instruction Operation, care and maintenance



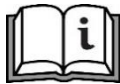
1 Content

17	Symbols.....	3
18	Read operating instructions.....	3
19	Intended use	3
20	Security	4
21	Important safety instructions for handling Li-Ion batteries.....	5
22	Delivery.....	7
23	Mounting	8
24	Replacing the filters.....	9
25	Maintenance and cleaning.....	9
26	Help with malfunctions	10
27	Technical data	10
28	Environmental protection	11
29	Warranty	11
30	CE Declaration of Conformity.....	12

2 Symbols



General commandment sign



Study operating instructions

3 Read operating instructions

Before using the device for the first time, read these original operating and safety instructions contained therein benenth. Act accordingly. Keep this operating manual for later use or for subsequent owners.

4 Intended use

Use this device exclusively in accordance with the information in this operating manual.

This device is also suitable for commercial use, e.g. in hotels, schools, hospitals, factories, stores, offices and rental stores.

The appliance may only be operated by children and by persons with a physical, sensory or mental disability, or by persons without the necessary experience and knowledge, under supervision or after appropriate training in the safe use of the appliance and in the hazards involved. The device is not a child's toy. Cleaning and maintenance to be performed by the user must not be carried out by children without supervision.

Only equip the device with original accessories and original spare parts.

Use the device only for cleaning indoors or of covered surfaces.

Do not use the device in explosive environments under any circumstances.

The device must not be used outdoors.

5 Security



Warning

Keep packaging films away from children - risk of suffocation.
Operators must be properly instructed in the use of this equipment.
Never absorb clothing, hair, eyes, fingers or other body parts.
This device is intended for dry use only.
This device is intended for indoor use only.
This device must only be stored in dry indoor areas.
Nozzles and tube end must never get near eyes or ears.
People or animals must not be vacuumed with the device.
This device is not suitable for picking up dust that is hazardous to health.
Never vacuum fine dust - it cannot be filtered and will damage the motor.
Never vacuum glowing ashes or burning objects such as cigarettes or matches.
Never use the unit near explosive or highly flammable substances.
Never suck in solvents, explosive gases or liquids.
The manufacturer is not liable for any damage caused by improper use or incorrect operation.
If modifications are made to the device or the device is used improperly, the warranty will be voided.



Attention!

Short circuit hazard!

Never vacuum water and other liquids such as wet carpets.

Destruction of the filters!

Never vacuum sharp objects such as glass splinters, nails, etc. Also binding substances such as gypsum or cement can also damage the filters, so that they are unusable.

Damage to the device due to rain and dirt!

Never use or store the device outdoors!

Risk of overheating!

Always leave the vents of the device free!

Risk of electric shock!

Never touch the plug with wet hands.
 Never pull the power plug out of the socket by the cable, but always directly by the plug.
 The power cord must not be folded, jammed, pulled over sharp edges or run over and must not come into contact with heat sources.
 If the power cord of this device is damaged, it must be replaced by the manufacturer, its customer service or a similarly qualified person in order to avoid danger. **Danger to life!**
 Do not operate the charger if there is visible damage to the housing, if a defect is suspected (e.g. after a fall) or if the power cord is defective.
 Do not use any damaged extension cables.

6 Important safety instructions for handling Li-Ion batteries

Safety instructions!



Before using the battery packs, read the operating instructions for the battery packs and the charger carefully and completely. Keep all the documents enclosed with the battery pack and the charger.

- Protect battery packs from moisture!
- Do not use defective or deformed battery packs!
- Do not open battery packs!
- Do not short-circuit the contacts of the battery packs!
- Keep battery packs away from children!



- Do not expose battery packs to open fire or high temperatures!
- Warning of general danger!
- A slightly acidic, flammable liquid can escape from defective Li-Ion battery packs!
- If fluid leaks and comes into contact with your skin, flush immediately with plenty of water. If battery fluid gets into your eyes, wash them out with clean water and seek medical attention immediately!
- Transport of Li-Ion battery packs: The shipment of Li-Ion battery packs is subject to dangerous goods legislation (UN 3480 and UN 3481). Clarify the currently valid regulations when shipping Li-Ion battery packs. If necessary, inform your transport company. Certified packaging is available from Cleanfix.

Intended use

Battery packs marked CAS are 100% compatible with CAS (Cordless Alliance System) devices. To select the correct devices, please contact your dealer. Observe the operating instructions of the devices used. E.g. the charging process is indicated by the charger, details on this can be found in the operating instructions of the charger.

The user alone is liable for damage caused by improper use. Generally recognized accident prevention regulations and the safety instructions must be observed.

Use Charge the battery pack before use.

Do not recharge a fully charged battery pack.

Recharge the battery pack when the power drops.

The optimum storage temperature is between 10°C and 30°C. The permissible charging temperature is between 0°C and 50°C.

Li-Ion battery packs have a capacity and signal display (**model-dependent**):

- Press the key and the charging status is indicated by the LED lights.
If an LED light flashes, the battery pack is almost empty and must be recharged.
- **Battery packs can go into deep discharge when not used for a long time and can then no longer be recharged! Therefore, recharge the batteries every 3 - 6 months!**

Environmental protection

- Used battery packs contain large quantities of valuable raw materials and plastics, which can also be fed into a recycling process.



- Battery packs must not be disposed of with household waste!
- Return defective or used battery packs to the CAS dealer!
- Discharge the battery pack in the power tool before disposing of it. Secure the contacts against short circuit (e.g. insulate with adhesive tape).
- Do not throw battery packs into the water!

Cleanfix Reinigungssysteme AG
Stettenstrasse 15, 9247 Henau, Schweiz
www.cleanfix.com

Subject to change in the interest of technical progress. © by CAS

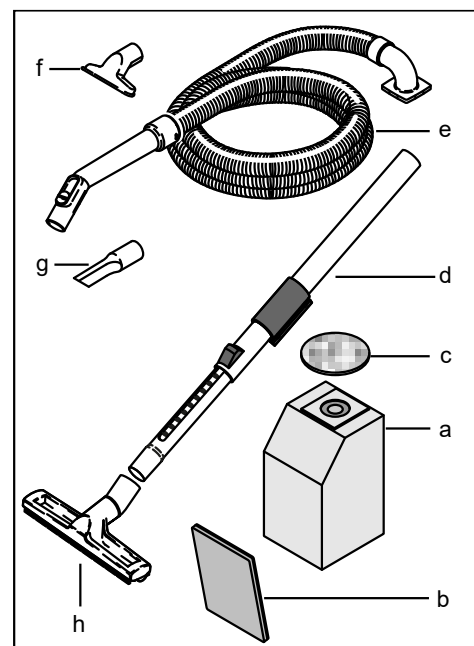
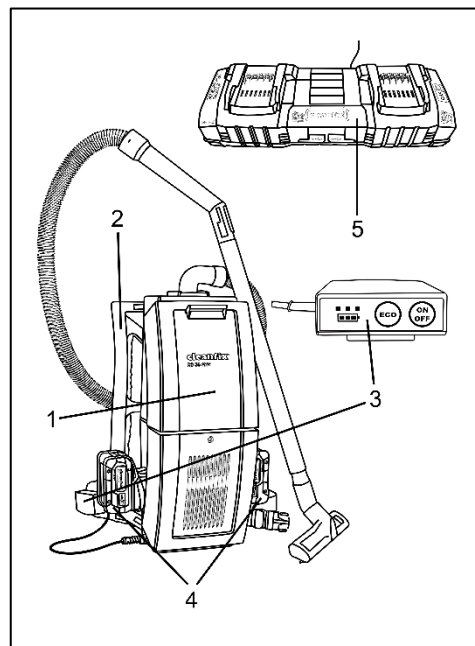
7 Delivery

Unpack machine

Carefully unpack the device and check the contents of the packaging for completeness (see scope of delivery). If you notice any transport damage, contact your dealer immediately. Make sure that you do not tear out any cables or damage them with a knife when unpacking the device. Keep the packaging for later transport (e.g. moving, service)!

Scope of delivery

1	1x Backpack vacuum cleaner	Art.-Nr.: 025.500
2	1x Back support unit mounted on the device	Art.-Nr.: 025.150
3	1x Control unit mounted on the belt	Art.-Nr.: 025.416
4	2x Batteries 18V / 5.5 Ah (optional)	Art.-Nr.: 025.510
4	2x Batteries 18V / 10.0 Ah (optional)	Art.-Nr.: 025.511
5	1x Charger ASC 145 DUO SEV (optional)	Art.-Nr.: 025.512
5	1x Charger ASC 145 DUO VDE (optional)	Art.-Nr.: 025.513
a	1x Fleece dust bag	Art.-Nr.: 025.431
b	1x Exhaust air filter	Art.-Nr.: 025.221
c	1x Blower filter	Art.-Nr.: 025.271
d	1x Stainless steel telescopic suction tube	Art.-Nr.: 022.015
e	1x Suction hose highly flexible	Art.-Nr.: 025.050
f	1x Upholstery nozzle	Art.-Nr.: 645.004
g	1x Joint nozzle	Art.-Nr.: 645.006
h	1x Hard floor nozzle with brush bar, 30 cm	Art.-Nr.: 646.200
	1x Instruction manual backpack vacuum cleaner	Art.-Nr.: 025.550
	1x Instruction manual Battery pack (optional)	Art.-Nr.: 025.560
	1x Instruction manual Charger (optional)	Art.-Nr.: 025.565
	1x Package Leaflet	Art.-Nr.: 025.560



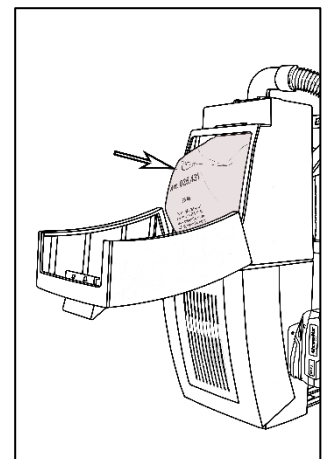
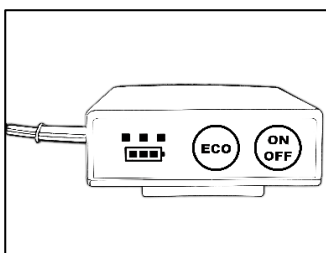
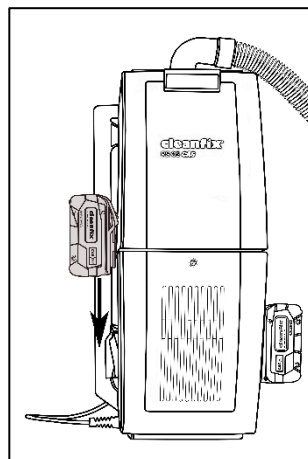
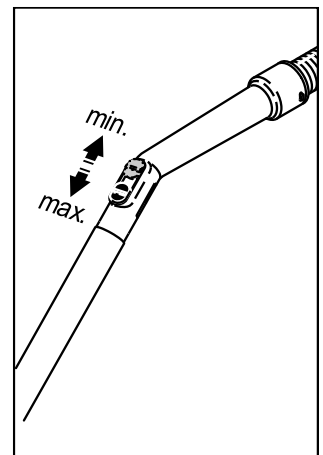
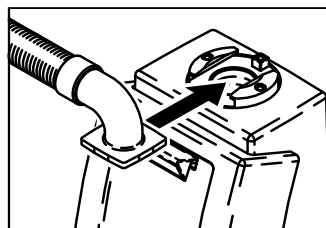
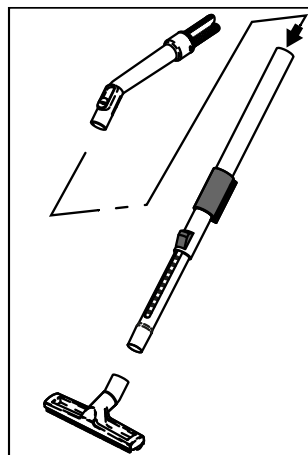
8 Mounting



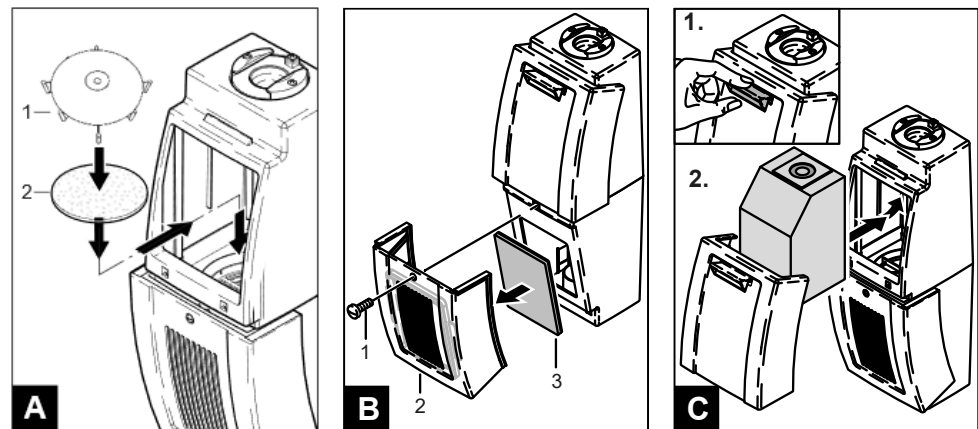
Warning!

Never use a defective device!

- Insert the telescopic suction tube, the suction hose and the dust nozzle well-set into each other.
- Push the hose into the suction nozzle of the device.
- Slide the fully charged battery packs into the holders on the side of the back suction cup until they audibly click into place.
- On the upper part of the suction tube, the suction power can be regulated mechanically depending on the work application.
- Insert the dust bag.
- Switch the back suction unit on and off using the control panel on the strap of the carrying unit.
- By activating the ECO mode on the control panel, the suction power, noise emission and battery consumption can be reduced.
- The control panel has a display about the charge status of the battery packs.



9 Replacing the filters



Motor protection filter (2) change

A → After changing the fleece filter five times or after heavy contamination, the motor filter (2) must be changed. Dismantle the filter fixation (1) and remove the used motor protection filter, insert the new motor protection filter and press on the filter fixation.

Change exhaust air filter

B → Remove the fixing screw (1) of the filter cover (2), remove the filter cover and replace the exhaust air filter (3). The exhaust air filter should be replaced after approx. 50 - 100 operating hours at the latest, or if it is heavily soiled.

Replacing the Dust bag

C → Open the fixed container (1). Press the key of the upper part lid down and open the container.

Fold the ring opening inwards and slide the dust bag with the reinforcement sleeve onto the fitting of the suction container.

10 Maintenance and cleaning



→ **Before carrying out any maintenance and service work, remove the two batteries!**

→ **To ensure safety and proper function, use only original Cleanfix replacement filters. All filters must never be washed.**

- Clean the device and accessories after use with a damp cloth.
- If there is a blockage, which is noticeable by a drop in suction power, stop the motor immediately. Check the filling level of the dust bag and replace it if it is too $\frac{3}{4}$ full.
- Check nozzles, suction tube and hose for blockage.
- In case of repair, please contact your specialized dealer or one of the authorized service workshops. You will be served quickly and professionally.
- Our products have been tested for safety at the factory.

11 Help with malfunctions

Dear Customer,

our products are subject to strict quality control. If this device still does not work properly, we are very sorry. Before contacting our customer service, please check whether one of the errors listed below is present.



Warning!

Switch off the device or the batteries and remove them before you start troubleshooting, to prevent the device from being switched on accidentally.

Errors	Possible cause	Solution
Device does not run.	Batteries are empty.	Charge the batteries.
Device does not absorb dirt.	Dust bag is overfilled.	Change the dust bag.
	Filter is dirty.	Clean or change the corresponding filter.
	Nozzle, suction tube or suction hose are clogged.	Remove the clogging. If necessary, use a long wooden stick (broom handle).
Device runs unusually loud.	Particles that have been sucked in block the air path.	Remove the clogging. If necessary, use a long wooden stick (broom handle).

12 Technical data

Rated voltage	36 V
Rated power motor	600 W
Battery technology	Li-Ion
Battery capacity	5.5 Ah oder 10.0 Ah
Runtime 10.0 Ah	30 Min. / 60 min. in ECO mode
Runtime 5.5 Ah	17 Min. / 37 min. in ECO mode
Battery charger	ASC 145 DUO / 220-240 V
Loading time 10 Ah	approx. 1.5 h
Loading time 5.5 Ah	approx. 45 min.
Vacuum	200 mbar / 135 mbar in ECO mode
Weight ready for use incl. 2 batteries	7.5 kg
Dimensions L x W x H	28 x 37 x 57 cm
Dust bag volume	4.5 Liter
Sound pressure level	76 dB / 68 dB in ECO mode
Nominal size accessories	35 mm

13 Environmental protection



When disposing of the device, please remember that the packaging materials are recyclable. Please do not dispose of the packaging in the household waste, but recycle it.



Waste equipment contains valuable recyclable materials that should be sent for recycling. Batteries, plastics and similar materials must not be released into the environment. Therefore, please dispose of old appliances via suitable collection systems. Use the collection point set up in your place of residence for the return and recycling of waste electrical and electronic equipment, as well as for the return and recycling of rechargeable batteries.

Batteries must be disposed of separately!

Please contact your local authority or your dealer for more information.

Keep the used device and the rechargeable batteries safe from children until disposal!

14 Warranty

In each country, the warranty conditions issued by our responsible sales company apply. We will repair any faults in your device free of charge within the warranty period if the cause is a material or manufacturing defect. In the event of a warranty claim, please contact your dealer or the nearest authorized service center with proof of purchase.

15 CE Declaration of Conformity

We hereby declare that the machine described below complies with the relevant basic safety and health requirements of the EU directives due to its design and construction and in the version placed on the market by us. In the event of a modification of the machine not agreed with us, this declaration loses its validity.

Backpack vacuum cleaner RS05 CAS

We,
Cleanfix Reinigungssysteme AG
Stettenstrasse 15 | CH-9247 Henau

declare under their sole responsibility that the product, backpack vacuum cleaner RS05 CAS, to which this declaration refers, conforms to the following standards / norms or normative documents.

Standards / Norms:

EN 55014-1:2022-12
EN 55014-2:2022-10
EN 60335-1:2020-08
EN 60335-2-69:2021
EN 61000-4-2:2009-12
EN 62233:2008-11
EU-Regulation 666/2013

Guidelines:

2004/108/EG (EMC)
2006/42/EC (MD)
2009/125/EC
2011/65/EC (RoHS)
2010/30/EU
2012/19/EU (WEEE)

Henau, 01.06.2023



Daniel Stutz
Head of development
Cleanfix Reinigungssysteme AG
Stettenstrasse 15, CH-9247 Henau
Tel. +41 71 955 47 47 / Fax +41 71 955 47 60
info@cleanfix.com / www.cleanfix.com